

Vermiculux Boards

Protection of Structural Steel

Up To 4 Hours

Fire Protection

(to AS 1530.4 - 1997)

Information given in this publication are given to the best of our knowledge and in good faith. Trafalgar Building Products is not responsible if recipients of test reports, assessments or literature misinterpret the contents and wrongly use products based on those interpretations. Trafalgar reserves the right to change specification without notice.

DESCRIPTION

Composition

Vermiculux is a low density, monolithic (non-laminar) insulating board containing vermiculite and calcium silicate reinforced with cellulose fibres. It is cured in an autoclave to provide high dimensional stability.

Shape and size

Square boards sanded smooth on both faces and supplied with opposite edges rebated to half their thickness.

Thicknesses:

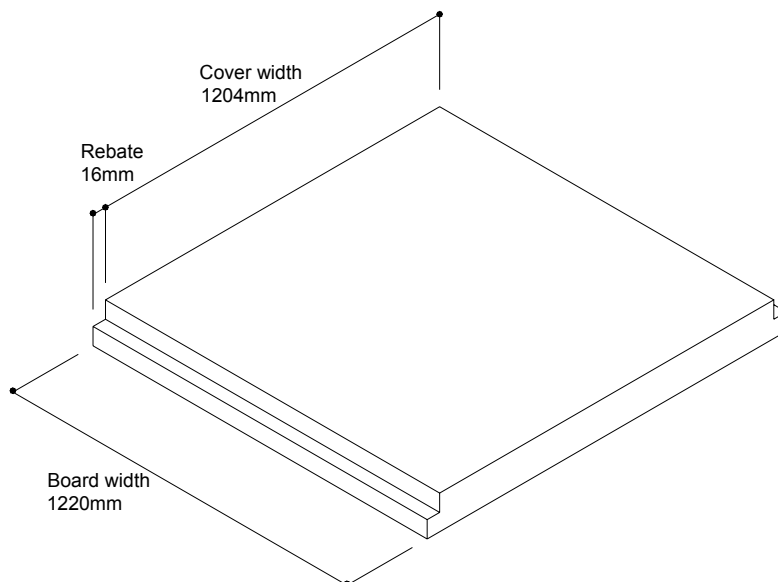
20, 25, 30, 35, 40, 45, 50, 55 and 60mm

Manufacturing tolerances:

Length and width: +0, -1.5mm

Thickness: +0, -1.5mm

Rebate: width 0.8mm: depth -0, +1mm



CUTTING, WORKING AND STORAGE

Vermiculux can be cut, drilled and shaped easily using normal woodworking tools. No special controls are deemed necessary, but it is recommended that power cutting operations be performed in open or well-ventilated areas. If excessive dust is being generated Class L respiratory protective devices should be worn. safety goggles should be worn when cutting boards with power tools.

CUTTING

Cutting by hand

Use a fine-toothed panel saw for

straight cuts and a padsaw, a keyhole saw or a coping saw for shaped cuts. Support the board as cutting progresses and for best results place scrap board beneath the cut to protect the back surface from spalling.

Power saws

Use a power saw fitted with a tungsten carbide or diamond-tipped blade.

DRILLING

Place scrap board beneath drilling area and use low or high speed twist hits in hand or power drills.

PLANING AND SHAPING

Use a Surform plane, a rasp or a file.

SMOOTHING

Use conventional sanding papers: garnet paper is best for fine sanding.

STORAGE

Vermiculux should be stored under cover on a flat base clear of the ground. If stored in the open the stack should be fully protected from the weather.

FINISHING AND DECORATING

Vermiculux is **not suitable** for applications where it is permanently exposed to wet or moist conditions without some form of impervious over-cladding.

MAKING GOOD

Fixing holes and joints may be filled and sanded smooth.

The performance of the boards is not impaired if left undecorated, but if required conventional finishes can be applied easily.

PAINTING

Anti-alkali primers are not needed.

Emulsion paints

Apply one coat diluted with 25 per cent water to prime the board, then paint as required.

Oil-based paints

Apply a universal primer before painting normally.

Vapour barrier

A vapour barrier can be formed by applying a diluted priming coat followed by two undiluted coats of chlorinated rubber-based paint, epoxy resin paint or polyurethane paint.

PAPERING

Size the board to seal against suction and improve slip, then hang papers or films in the normal way.

PLASTERING

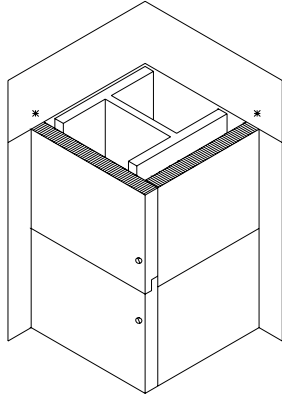
Apply a sealing coat of 5 parts water to one part Unibond or similar and allow to dry. Follow with a bonding coat of 1 part water to 3 parts Unibond and apply plaster while the bonding coat is still tacky and wet. In all cases follow the instructions of the plaster manufacturer.

SINGLE CASINGS

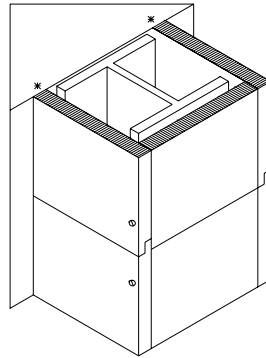
Casings can be 2, 3, or 4 sided depending upon whether the beam or column is partially protected by masonry or concrete, or fully exposed. Casings are constructed by cutting boards to fit accurately and fixing them around the steelwork by butting

one board to the other and driving fixings straight into the edge of the board. When used to encase structural steelwork lengths of board can be joined by simply lapping the rebated edges, no cover strips are required.

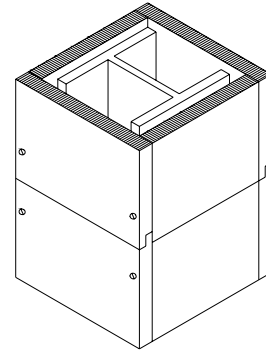
4 sided casings are supported by the steelwork: no fixing straps or angles are required. 2 and 3 sided casings must be secured by straps or angles where they abut another element, ie a wall or structural soffit.



2 sided casing
* fixing angles required



3 sided casing
* fixing angles required



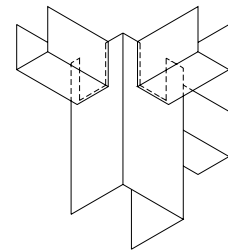
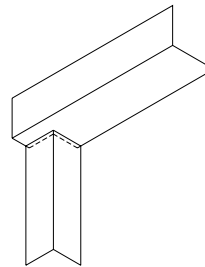
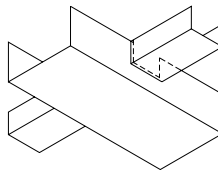
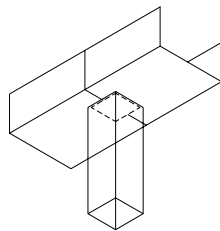
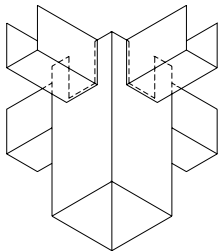
4 sided casing
no fixing angles required

JUNCTIONS BETWEEN CASINGS

In principle all junctions should be detailed as butt joints with the smaller casing abutting the larger.

The larger casing should be notched around the smaller beam, and the smaller casing should then

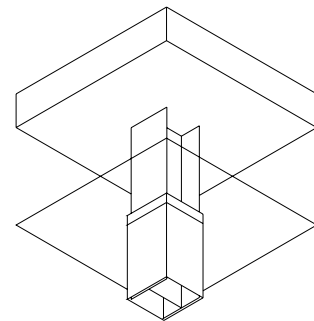
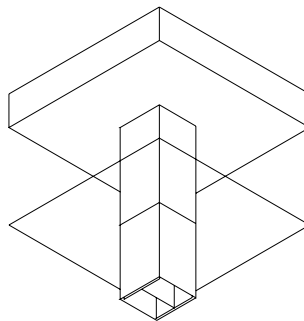
be butted tightly against the larger casing and the joint filled.



COLUMNS PASSING THROUGH CEILINGS

Unless the suspended ceiling is able to protect the column to the same standard as the casing, the casing must continue through the ceiling to a level where its protection is no longer required.

Even where a suspended ceiling provides adequate protection to any steelwork above its surface, a more satisfactory joint is usually possible by continuing the casing through the ceiling level and then trimming the ceiling to the casing



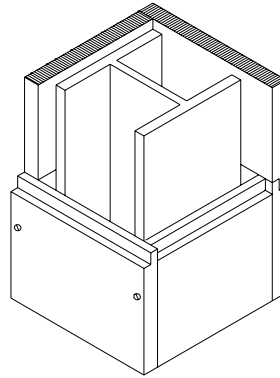
CASINGS ABUTTING IRREGULAR SURFACES

Where casings abut irregular walls or soffits the edge of the board should be cut to fit the irregular

surface as accurately as possible, and any gaps should be stopped with Fyreflex.

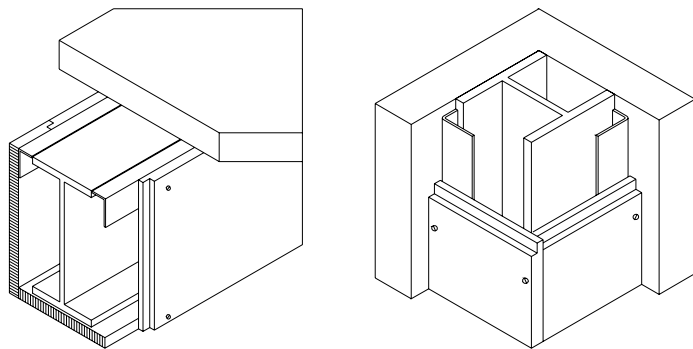
4-SIDED CASINGS

The boards are placed around the column and secured to each other by fixings made directly into the edge of the board: no battens or structural supports are required.



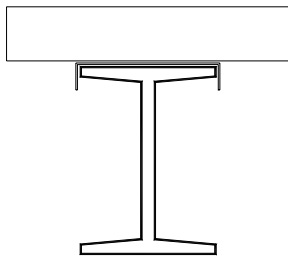
3-SIDED AND 2-SIDED CASINGS

These casings cannot be self-supporting and must be fixed securely to the structure. Suitable fixing points should be provided by one of the methods shown below.



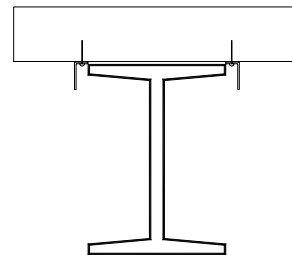
Steel straps laid over beam

100mm wide x 20g mild steel straps laid over beam at 300mm nominal centres to provide a 50mm downstand.



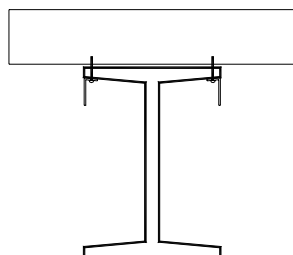
Steel angles fixed to soffit or wall

50mm x 25mm x 20g mild steel angles fixed to soffit or wall with fixings at 300mm nominal centres. This method is also suitable where one flange of the steelwork is imbedded in the structure.



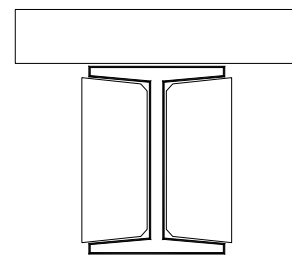
Steel angles fixed to flange

50mm x 25mm x 20g mild steel angles fixed directly to the flange of the steelwork using no. 8 self tapping screws (min. 12mm long) at 300mm centres.

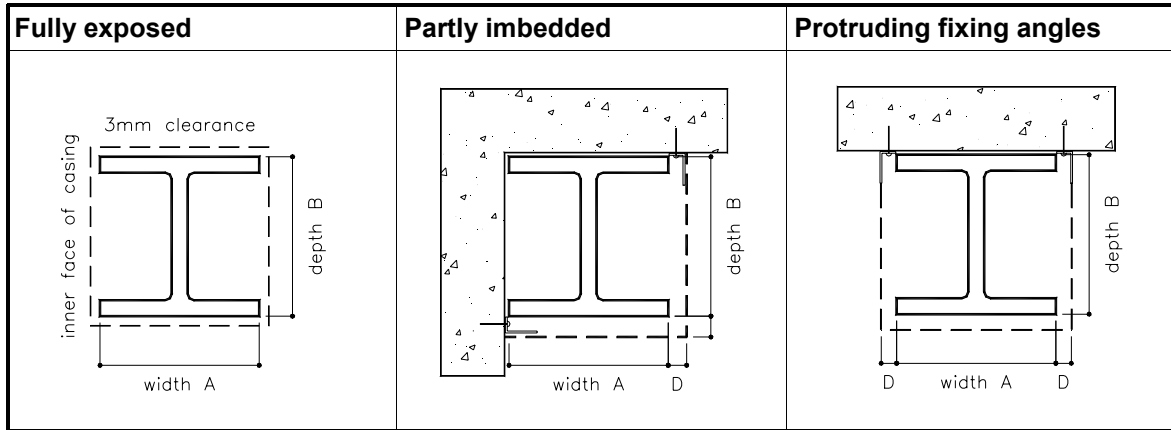


Vermiculux noggings

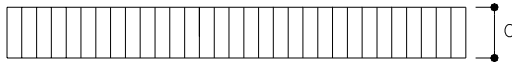
Vermiculux noggings cut accurately to fit tightly between the flanges of the steelwork and then forced into place. Two noggings are required per board, centred 45mm from each end of the board. the noggings should be cut from the same board thickness as the casings provided that this is 25mm at least.



SIZE OF STEELWORK

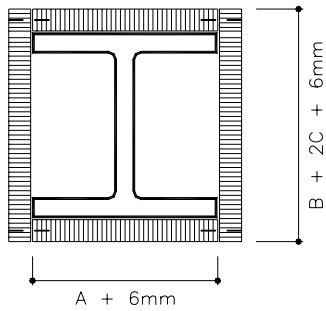


SIZE OF CASINGS

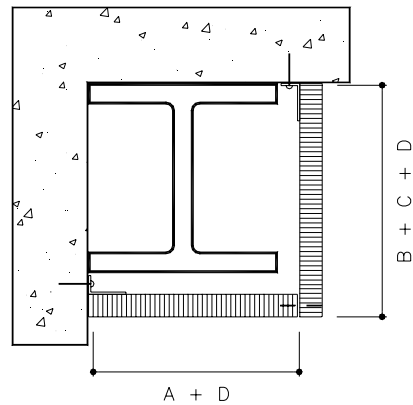


Thickness of Vermiculux determined by reference to tables on pages 8-15 of this publication

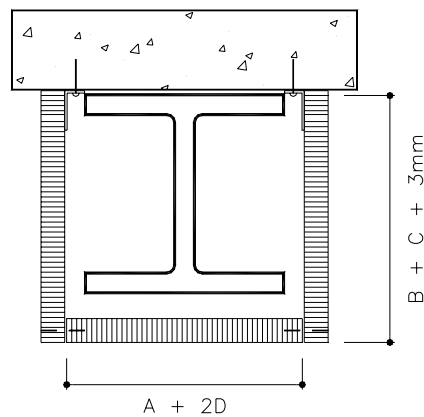
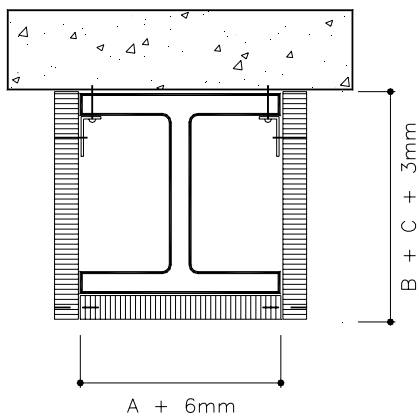
4-Sided Casing



2-Sided casing



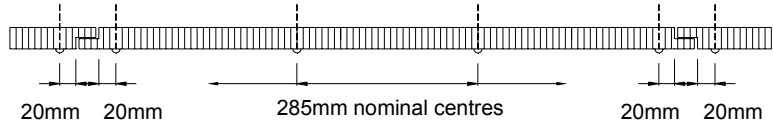
3-Sided casing



FIXING TO STRUCTURE

1. Fixing centres

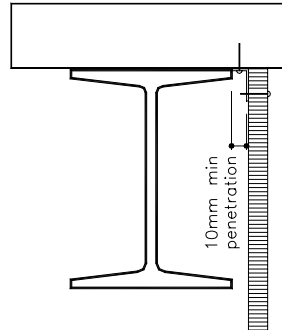
Fixings to be screws of min. diameter no.8. 55mm and 60mm boards may be counterbored up to 15mm to allow adequate penetration.



2. Fixing to steel straps or angles

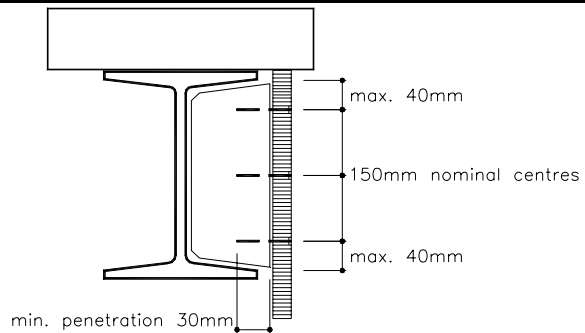
Suitable screw types are:

- 1 Self-tapping (thread-forming) screws. Drill a pilot hole through the board and steelwork together and countersink if required.
- 2 Self-drilling, self-tapping screws. These screws have high pull-out resistance and can be used without pilot holes or countersinking.



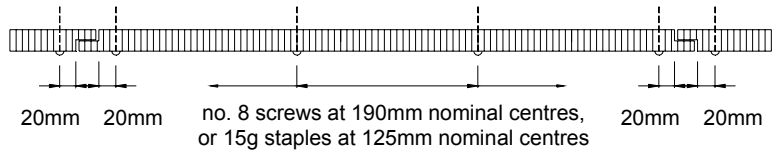
3. Fixing to Vermiculux noggings

Suitable screw types are woodscrews or self-tapping screws.



EDGE FIXINGS

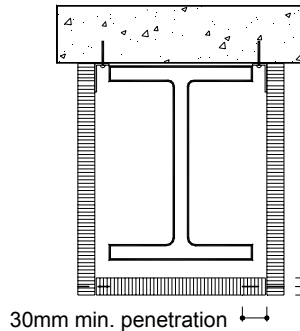
1. Fixing centres



2. Fixing with screws

Suitable screw types (min. diameter no.8) are:

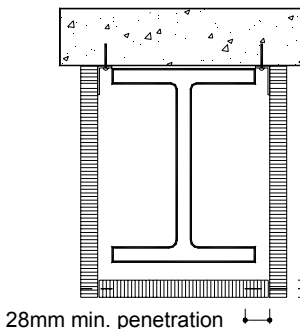
- 1 Woodscrews or self-tapping screws. A pilot hole is required, countersunk if needed.
- 2 HILO Drywall screws. These require no pilot hole or countersinking.



Use woodscrews, supascrews, self-tapping screws or HILO Drywall screws. Boards 50 mm thick and over can be counterbored up to 15 mm deep to avoid using overlong screws. A minimum penetration of 30 mm is required when edge screwing Vermiculux and a minimum 10 mm penetration is required through metal angles or straps. Non-tapering screws give the best pull-out resistance. Do not over tighten.

fixing at centre of board thickness

3. Fixing with power-driven staples (min. 15g)



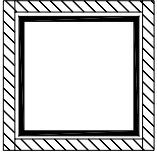
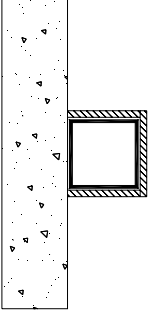
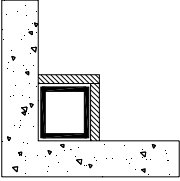
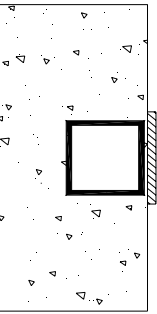
Thicknesses of Vermiculux up to 45 mm can be stapled. Staples must be at least 15 gauge and long enough to ensure a penetration of not less than 28 mm.

fixing at centre of board thickness

VERMICULUX

PRODUCT PROPERTIES	VALUE
Length and Breadth Tolerance (mm)	-0 TO +4.8
Thickness Tolerance (mm)	-0.8 TO +0
Nominal Dry Density (kg/m ³)	500
Alkalinity / pH Value	7 - 10
Moisture Content (%) Conditioned	3 - 6
Moisture Movement (%) - Conditioned to Saturated	0.05
Water Absorption (%)	140
Thermal Conductivity (W/mK)	0.13
Thermal Movement (x10 ⁻⁶ per °C) up to 100°C	4
Flexural Modulus (N/mm ²) - Average of 2 Directions	1400
Bending Strength (N/mm ²) - Average of 2 Directions	2
Tensile Strength (N/mm ²) - Average of 2 Directions	0.9
Compressive strength (N/mm ²)	2.5
Compressive Resistance (N/mm ²) at 5% Compression	3
Extraction Resistance (N) (Wood Screws Embedded 19mm)	
- From Face of Board	225
- From Edge of Board	225

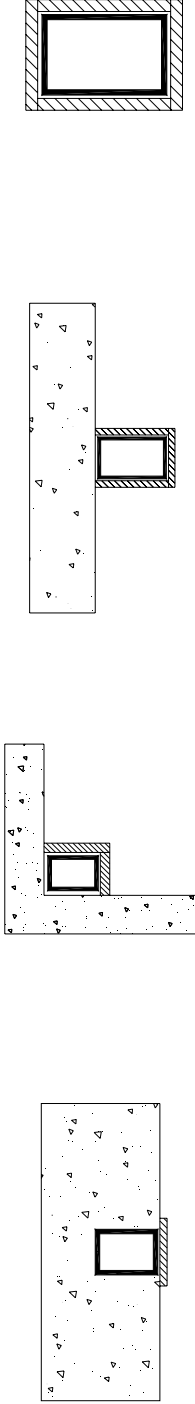
SQUARE HOLLOW SECTIONS



Thicknesses of Vermiculux in mm

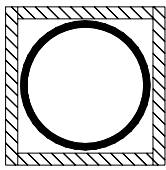
DESIGNATION	THICK mm	1-SIDED ENCASEMENT										2-SIDED ENCASEMENTS										3-SIDED ENCASEMENT										4-SIDED ENCASEMENTS									
		Hp/A		FIRE RESISTANCE LEVELS				Hp/A	FIRE RESISTANCE LEVELS				Hp/A		FIRE RESISTANCE LEVELS				Hp/A	FIRE RESISTANCE LEVELS				Hp/A		FIRE RESISTANCE LEVELS															
		m ⁻¹	m ⁻¹	1	1.5	2	3		4	1	1.5	2	3	4	1	1.5	2	3		4	1	1.5	2	3	4	1	1.5	2	3	4											
250x250	9	30	20	20	20	35	45	60	20	20	20	40	50	90	20	20	25	45	50	130	20	20	30	45	55	120	20	20	30	45	55	175	25	30	40	55	65				
	6	45	20	20	20	35	45	90	20	20	25	45	50	130	20	20	30	45	55	130	20	20	30	45	55	175	25	30	40	55	65	200	25	30	40	55	65				
200x200	9	30	20	20	20	35	45	60	20	20	20	40	50	90	20	20	25	45	50	160	20	20	30	45	60	125	20	20	30	45	55	210	25	30	45	55	70				
	6	45	20	20	20	35	50	90	20	20	25	45	50	135	20	20	30	45	60	160	20	20	30	45	60	180	25	30	40	50	60	210	25	30	45	55	70				
150x150	9	35	20	20	20	35	50	65	20	20	20	40	50	95	20	20	25	45	50	180	20	20	30	45	60	125	20	20	30	45	55	215	25	30	45	55	70				
	6	45	20	20	20	35	50	90	20	20	25	45	50	135	20	20	30	45	60	180	20	20	30	45	60	185	25	30	45	55	215	25	30	45	55	70					
125x125	9	35	20	20	20	35	50	65	20	20	20	40	50	100	20	20	25	45	50	200	20	20	30	45	60	130	20	20	30	45	55	265	30	45	60	-	-				
	6	45	20	20	20	35	50	95	20	20	30	45	50	140	20	20	30	45	60	200	20	20	30	45	60	185	25	30	45	55	265	30	45	60	-	-					
100x100	9	35	20	20	20	35	50	70	20	20	25	40	50	100	20	20	30	45	100	20	20	30	45	60	135	20	20	30	45	55	285	30	45	60	-	-					
	6	50	20	20	20	35	50	95	20	20	30	45	50	140	20	20	30	45	140	20	20	30	45	60	190	25	30	45	55	285	30	45	60	-	-						
89x89	6	50	20	20	20	35	50	95	20	20	30	45	50	145	20	20	30	45	145	20	20	30	45	60	190	25	30	45	55	310	40	60	60	-	-						
	5	60	20	20	20	40	50	115	20	20	30	45	55	170	25	25	40	50	170	25	25	40	50	60	225	25	30	45	60	310	40	60	60	-	-						
75x75	3.5	80	20	20	25	40	50	155	20	25	35	50	60	235	25	25	40	50	235	25	25	40	50	60	310	30	45	60	60	370	40	60	60	-	-						
	6	50	20	20	20	35	50	100	20	20	30	45	50	150	20	20	30	45	150	20	20	30	45	60	200	25	30	45	55	370	40	60	60	-	-						
65x65	5	60	20	20	20	40	50	115	20	20	30	45	55	175	25	25	40	50	175	25	25	40	50	60	230	25	30	45	60	310	40	60	60	-	-						
	4	70	20	20	25	40	50	140	20	25	35	50	60	210	25	25	40	50	210	25	25	40	50	60	280	30	45	60	60	370	40	60	60	-	-						
50x50	3.5	80	20	20	25	40	50	160	20	25	40	50	60	240	25	25	40	50	240	25	25	40	50	60	315	30	45	60	60	370	40	60	60	-	-						
	3	90	20	20	25	45	50	180	25	30	40	55	65	270	30	30	45	60	270	30	30	45	60	75	360	40	60	60	370	40	60	60	-	-							
50x50	6	50	20	20	20	35	50	100	20	30	45	55	150	20	20	30	45	150	20	20	30	45	60	205	25	30	45	55	310	40	60	60	-	-							
	5	60	20	20	20	40	50	120	20	20	30	45	55	175	25	25	40	55	175	25	25	40	55	235	25	30	45	60	310	40	60	60	-	-							
50x50	4	75	20	20	25	40	50	145	20	25	35	50	60	215	25	25	40	60	215	25	25	40	50	70	285	30	45	60	60	370	40	60	60	-	-						
	3	90	20	20	25	40	50	180	25	30	40	50	65	270	30	30	45	60	270	30	30	45	60	365	40	60	60	370	40	60	60	-	-								
50x50	5	65	20	20	20	40	50	125	20	20	30	45	55	185	25	25	40	55	185	25	25	40	55	250	30	45	60	60	370	40	60	60	-	-							
	4	75	20	20	25	40	50	150	20	25	35	50	60	220	25	25	40	60	220	25	25	40	50	295	30	45	60	60	370	40	60	60	-	-							
50x50	3	95	20	20	20	45	50	185	25	30	45	55	280	30	30	45	60	280	30	30	45	60	370	40	60	60	370	40	60	60	-	-									

RECTANGULAR HOLLOW SECTIONS



Thicknesses of Vermiculux in mm

DESIGNATION	THICK mm	MASS Kg/m	1-SIDED ENCASEMENT										2-SIDED ENCASEMENTS										3-SIDED ENCASEMENT										4-SIDED ENCASEMENTS																								
			FIRE RESISTANCE LEVELS					Hp/A m ⁻¹	FIRE RESISTANCE LEVELS					Hp/A m ⁻¹	FIRE RESISTANCE LEVELS					Hp/A m ⁻¹	FIRE RESISTANCE LEVELS					Hp/A m ⁻¹	FIRE RESISTANCE LEVELS																														
			1	1.5	2	3	4		1	1.5	2	3	4		1	1.5	2	3	4		1	1.5	2	3	4		1	1.5	2	3	4																										
250x150	9	51.8	40	20	20	35	45	45	20	20	20	40	50	60	60	20	20	20	25	45	50	20	20	20	30	45	50	100	20	20	20	25	35	45	50	60	60	105	20	20	20	25	35	45	50	60	60	125	20	20	20	25	35	45	50	60	60
	6	35.6	55	20	20	20	35	50	50	20	20	25	45	50	90	20	20	20	25	45	50	20	20	20	30	45	50	145	20	20	20	25	35	45	50	60	60	170	25	25	25	30	40	50	60	70	70	180	25	25	25	30	40	50	60	70	70
	5	29.9	65	20	20	20	40	50	50	20	20	20	30	45	50	105	20	20	20	25	30	45	20	20	20	30	45	50	170	25	25	25	30	40	50	60	70	70	210	25	25	25	30	40	50	60	70	70									
200x100	9	37.7	45	20	20	35	50	50	20	20	20	40	50	60	65	20	20	20	25	45	55	20	20	20	30	45	50	105	20	20	20	25	35	45	50	60	60	125	20	20	20	25	35	45	50	60	60										
	6	26.2	60	20	20	40	50	50	20	20	20	25	45	55	90	20	20	20	25	45	55	20	20	20	30	45	50	155	20	20	20	25	35	45	50	60	60	185	25	25	25	30	40	55	65	70	70										
	5	22.1	75	20	20	40	50	50	20	20	20	30	45	55	110	20	20	20	25	45	55	20	20	20	30	45	50	180	25	25	25	30	40	55	65	70	70	215	25	25	25	30	40	55	65	70	70										
150x100	6	21.4	55	20	20	35	50	50	20	20	20	30	45	50	95	20	20	20	25	45	55	20	20	20	30	45	50	150	20	20	20	25	35	45	50	60	60	185	25	25	25	30	40	55	65	70	70										
	5	18.2	65	20	20	40	50	50	20	20	20	30	45	50	110	20	20	20	25	45	55	20	20	20	30	45	50	175	20	20	20	25	35	45	50	60	60	220	25	25	25	30	40	55	65	70	70										
	4	14.8	80	20	20	40	50	50	20	20	20	35	50	55	135	20	20	20	25	45	55	20	20	20	30	45	50	215	25	25	25	30	40	55	65	70	70	270	30	30	30	35	45	60	75	80	80										
150x60	5	14.2	85	20	20	45	50	50	20	20	20	30	45	50	110	20	20	20	25	45	55	20	20	20	30	45	50	195	25	25	25	30	40	55	65	70	70	225	25	25	25	30	40	55	65	70	70										
	4	11.6	105	20	20	45	50	50	20	20	20	35	50	50	140	20	20	20	25	45	50	20	20	20	30	45	50	240	25	25	25	30	40	55	65	70	70	275	30	30	30	35	45	60	75	80	80										
	3	8.96	135	20	20	45	50	50	20	20	20	35	50	55	175	25	25	25	30	40	55	20	20	20	30	45	50	307	30	30	30	35	45	60	75	80	80	355	40	40	40	45	60	75	90	100	100										
125x75	5	14.2	70	20	20	35	40	40	20	20	20	30	45	50	110	20	20	20	25	45	50	20	20	20	30	45	50	180	20	20	20	25	35	45	50	60	60	220	25	25	25	30	40	55	65	70	70										
	4	11.6	85	20	20	45	50	50	20	20	20	35	50	50	140	20	20	20	25	45	50	20	20	20	30	45	50	220	25	25	25	30	40	55	65	70	70	270	30	30	30	35	45	60	75	80	80										
	3	8.96	110	20	20	45	50	50	20	20	20	35	50	55	175	25	25	25	30	40	55	20	20	20	30	45	50	285	30	30	30	35	45	60	75	80	80	355	40	40	40	45	60	75	90	100	100										
100x60	6	12.0	65	20	20	40	40	40	20	20	20	30	45	50	100	20	20	20	25	45	50	20	20	20	30	45	50	165	25	25	25	30	40	55	65	70	70	200	25	25	25	30	40	55	65	70	70										
	5	10.3	80	20	20	40	40	40	20	20	20	30	45	50	115	20	20	20	25	45	50	20	20	20	30	45	50	195	25	25	25	30	40	55	65	70	70	230	25	25	25	30	40	55	65	70	70										
	4	8.49	95	20	20	40	45	45	20	20	20	35	50	50	140	20	20	20	25	45	50	20	20	20	30	45	50	235	25	25	25	30	40	55	65	70	70	280	30	30	30	35	45	60	75	80	80										
75x60	3.5	7.53	105	20	25	45	45	45	20	25	30	40	50	60	160	20	25	30	40	50	60	20	25	30	40	50	60	265	30	35	40	45	60	75	90	100	100	315	30	35	40	45	60	75	90	100	100										
	3	6.6	120	20	20	45	55	55	20	20	20	30	45	55	180	20	20	20	25	45	55	20	20	20	30	45	55	300	30	30	30	35	45	60	75	80	80	360	40	40	40	45	60	75	90	100	100										
	6	9.67	60	20	20	40	40	40	20	20	20	30	45	50	105	20	20	20	25	45	50	20	20	20	30	45	50	165	25	25	25	30	40	55	65	70	70	205	25	25	25	30	40	55	65	70	70										
75x50	5	8.35	70	20	20	40	40	40	20	20	20	30	45	50	120	20	20	20	25	45	50	20	20	20	30	45	50	190	25	25	25	30	40	55	65	70	70	235	25	25	25	30	40	55	65	70	70										
	4	6.92	85	20	20	45	45	45	20	20	20	35	50	60	145	20	25	30	40	50	60	20	25	30	40	50	60	230	25	25	25	30	40	55	65	70	70	285	30	30	30	35	45	60	75	80	80										
	3	5.42	110	20	20	45	50	50	20	20	20	30	45	50	180	25	30	30	40	50	60	20	25	30	40	50	60	290	30	30	30	35	45	60	75	80	80	365	40	40	40	45	60	75	90	100	100										

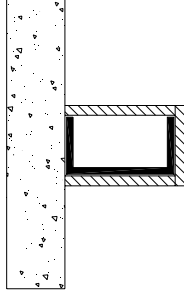


CIRCULAR HOLLOW SECTIONS

Thicknesses of Vermiculux in mm

DESIGNATION	OUTSIDE DIAM mm	WALL THICKNES	Mass Kg/m	4-SIDED ENCASEMENT																	
				Hp/A m ⁻¹	FIRE RESISTANCE LEVELS				FIRE RESISTANCE LEVELS												
					1	1.5	2	3	4	1	1.5	2	3	4							
300	323.9	6.4	50.1	160	25	25	40	40	50	60											
275																					
250	273.1	6.4	42.1	160	25	25	40	40	50	60											
200	219.1	6.4	33.6	165	25	25	40	40	50	60											
175																					
150NB	165.1	5.0	19.7	205	25	30	45	45	60	65											
125NB	139.7	5.0	16.6	210	25	30	45	45	60	70											
100NB	114.3	4.5	12.2	230	25	35	50	50	60	75											
90NB	101.6	4.0	9.63	260	30	45	60	60	-	-											
80NB	88.9	4.0	8.38	265	30	45	60	60	-	-											
65NB	76.1	3.6	6.44	290	30	45	60	60	-	-											
50NB	60.3	3.6	5.03	295	30	45	60	60	-	-											

CHANNELS



PARALLEL FLANGES

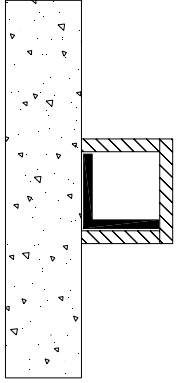
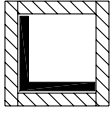
Thicknesses of Vermiculux in mm

DESIGNATION	Mass Kg/m	3-SIDED ENCASEMENT								4-SIDED ENCASEMENTS										
		Hp/A m ⁻¹	FIRE RESISTANCE LEVELS				Hp/A m ⁻¹	FIRE RESISTANCE LEVELS				Hp/A m ⁻¹	FIRE RESISTANCE LEVELS							
			1	1.5	2	3		4	1	1.5	2		3	4	1	1.5	2	3	4	
380PFC	55.2	125	20	20	30	45	55	140	20	25	35	50	60							
300PFC	40.1	135	20	25	35	50	55	155	20	25	35	50	60							
250PFC	35.5	130	20	20	35	45	50	150	20	25	35	50	60							
230PFC	25.1	170	25	25	40	50	60	190	25	30	45	55	65							
200PFC	22.9	165	25	25	40	50	60	190	25	30	45	55	65							
180PFC	20.9	165	25	25	40	50	60	195	25	30	45	55	65							
150PFC	17.7	170	25	25	40	50	60	200	25	30	45	55	65							

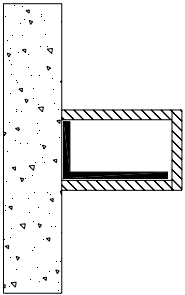
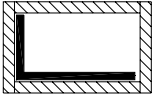
TAPERED FLANGES

Thicknesses of Vermiculux in mm

DESIGNATION	Mass Kg/m	3-SIDED ENCASEMENT								4-SIDED ENCASEMENTS										
		Hp/A m ⁻¹	FIRE RESISTANCE LEVELS				Hp/A m ⁻¹	FIRE RESISTANCE LEVELS				Hp/A m ⁻¹	FIRE RESISTANCE LEVELS							
			1	1.5	2	3		4	1	1.5	2		3	4	1	1.5	2	3	4	
125TFC	13.4	185	25	30	45	55	65	225	25	30	45	60	70							
100TFC	9.34	210	25	30	45	60	70	255	25	35	55	65	-							
75TFC	6.65	225	25	30	45	60	70	275	30	45	60	-	-							



**EQUAL
ANGLES**



**UNEQUAL
ANGLES**

Thicknesses of Vermiculux in mm

DESIGNATION mm x mm x tmm	Mass Kg/m	3-SIDED ENCASEMENT							4-SIDED ENCASEMENTS																				
		FIRE RESISTANCE LEVELS		FIRE RESISTANCE LEVELS		FIRE RESISTANCE LEVELS		FIRE RESISTANCE LEVELS		Hp/A m ⁻¹	FIRE RESISTANCE LEVELS		FIRE RESISTANCE LEVELS		Hp/A m ⁻¹														
		1	1.5	2	3	4	1	1.5	2		3	4	1	1.5		2	3	4											
200 x 200 x 26EA	76.8	20	20	25	40	50	20	20	25	40	50	85	20	20	25	40	50	20	20	25	40	50	85	20	20	25	40	50	
20EA	60.1	20	20	25	40	50	20	20	25	40	50	80	20	20	25	40	50	105	20	20	25	40	50	105	20	20	25	40	50
18EA	54.4	20	20	25	45	50	20	20	25	45	50	90	20	20	25	45	50	115	20	20	25	45	50	115	20	20	25	45	50
16EA	48.7	20	20	30	45	50	20	20	30	45	50	100	20	20	30	45	50	130	20	20	30	45	50	130	20	20	30	45	50
13EA	40.0	20	20	30	45	50	20	20	30	45	50	120	20	20	30	45	50	160	20	20	30	45	50	160	20	20	30	45	50
150 x 150 x 19EA	42.1	20	20	25	40	50	20	20	25	40	50	85	20	20	25	40	50	115	20	20	25	40	50	115	20	20	25	40	50
16EA	35.4	20	20	30	45	50	20	20	30	45	50	100	20	20	30	45	50	135	20	20	30	45	50	135	20	20	30	45	50
12EA	27.3	20	20	30	45	55	20	20	30	45	55	130	20	20	30	45	55	175	25	25	30	40	55	175	25	25	30	40	55
10EA	21.9	25	25	40	50	60	25	25	40	50	60	165	25	25	40	50	60	215	25	25	40	50	60	215	25	25	40	50	60
125 x 125 x 16EA	29.1	20	20	30	45	50	20	20	30	45	50	105	20	20	30	45	50	135	20	20	30	45	50	135	20	20	30	45	50
12EA	22.5	20	20	30	45	55	20	20	30	45	55	130	20	20	30	45	55	175	25	25	30	40	55	175	25	25	30	40	55
10EA	18.0	25	25	40	50	60	25	25	40	50	60	165	25	25	40	50	60	220	25	25	40	50	60	220	25	25	40	50	60
8EA	14.9	30	30	45	55	65	30	30	45	55	65	200	30	30	45	55	65	265	30	30	45	55	65	265	30	30	45	55	65
100 x 100 x 12EA	17.7	25	25	35	50	55	25	25	35	50	55	135	25	25	35	50	55	180	25	25	35	50	55	180	25	25	35	50	55
10EA	14.2	25	25	40	50	60	25	25	40	50	60	170	25	25	40	50	60	220	25	25	40	50	60	220	25	25	40	50	60
8EA	11.8	30	30	45	55	65	30	30	45	55	65	200	30	30	45	55	65	270	30	30	45	55	65	270	30	30	45	55	65
6EA	9.16	40	40	60	60	-	40	40	60	60	-	260	40	40	60	60	-	345	40	40	60	60	-	345	40	40	60	60	-
90 x 90 x 10EA	12.7	25	25	40	50	60	25	25	40	50	60	170	25	25	40	50	60	225	25	25	40	50	60	225	25	25	40	50	60
8EA	10.6	25	25	45	55	65	25	25	45	55	65	200	25	25	45	55	65	270	30	30	45	55	65	270	30	30	45	55	65
6EA	8.22	30	30	45	60	-	30	30	45	60	-	260	30	30	45	60	-	345	40	40	60	60	-	345	40	40	60	60	-
75 x 75 x 10EA	10.5	25	25	40	50	60	25	25	40	50	60	170	25	25	40	50	60	225	25	25	40	50	60	225	25	25	40	50	60
8EA	8.73	25	25	45	55	70	25	25	45	55	70	205	25	25	45	55	70	270	30	30	45	60	70	270	30	30	45	60	70
6EA	6.81	30	30	45	60	-	30	30	45	60	-	260	30	30	45	60	-	350	40	40	60	60	-	350	40	40	60	60	-
5EA	5.27	40	40	60	60	-	40	40	60	60	-	335	40	40	60	60	-	450	60	60	60	60	-	450	60	60	60	60	-
65 x 65 x 10EA	9.02	25	25	40	50	60	25	25	40	50	60	170	25	25	40	50	60	230	25	25	40	50	60	230	25	25	40	50	60
8EA	7.51	25	25	45	55	70	25	25	45	55	70	205	25	25	45	55	70	275	30	30	45	60	70	275	30	30	45	60	70
6EA	5.87	30	30	45	60	-	30	30	45	60	-	260	30	30	45	60	-	350	40	40	60	60	-	350	40	40	60	60	-
5EA	4.56	40	40	60	60	-	40	40	60	60	-	335	40	40	60	60	-	450	60	60	60	60	-	450	60	60	60	60	-

Thicknesses of Vermiculux in mm

DESIGNATION mm x mm x tmm	Mass Kg/m	3-SIDED ENCASEMENT							4-SIDED ENCASEMENTS														
		FIRE RESISTANCE LEVELS		FIRE RESISTANCE LEVELS		FIRE RESISTANCE LEVELS		FIRE RESISTANCE LEVELS		Hp/A m ⁻¹	FIRE RESISTANCE LEVELS		FIRE RESISTANCE LEVELS		Hp/A m ⁻¹								
		1	1.5	2	3	4	1	1.5	2		3	4	1	1.5		2	3	4					
150 x 100 x 12UA	22.5	20	25	35	50	60	20	25	35	50	60	140	25	30	40	55	65	175	25	30	40	55	65
10UA	18.0	20	30	40	55	65	20	25	30	45	55	175	25	30	45	60	70	220	25	30	45	60	70
150 x 90 x 16UA	27.9	20	25	30	45	50	20	25	30	45	50	110	20	25	35	50	60	140	20	25	35	50	60
12UA	21.6	20	25	35	50	60	20	25	35	50	60	145	20	25	30	40	55	175	25	30	40	55	65
10UA	17.3	20	30	40	55	65	20	25	30	45	55	180	25	30	45	60	70	220	25	30	45	60	70
8UA	14.3	25	30	45	50	70	25	30	45	50	70	215	25	30	45	60	-	265	30	45	60	-	-
125 x 75 x 12UA	17.7	20	25	35	50	60	20	25	35	50	60	145	25	30	40	55	65	180	25	30	40	55	65
10UA	14.2	20	30	40	55	65	20	25	30	45	55	180	25	30	45	60	70	220	25	30	45	60	70
8UA	11.8	25	30	45	60	70	25	30	45	60	70	220	25	30	45	60	-	270	30	45	60	-	-
6UA	9.16	30	45	50	-	-	30	45	50	-	-	280	30	45	60	-	-	345	40	60	60	-	-
100 x 75 x 10UA	12.4	25	30	40	55	65	25	30	40	55	65	175	25	30	40	55	60	225	25	30	40	55	60
8UA	10.3	25	30	45	55	70	25	30	45	55	70	210	25	30	45	60	-	270	30	45	60	-	-
6UA	7.98	30	45	60	-	-	30	45	60	-	-	270	30	45	60	-	-	345	40	60	60	-	-
75 x 50 x 8UA	7.2	25	30	45	60	70	25	30	45	60	70	220	25	30	45	60	-	275	30	45	60	-	-
6UA	5.63	30	45	60	-	-	30	45	60	-	-	280	30	45	60	-	-	350	40	60	60	-	-
5UA	4.37	40	60	60	-	-	40	60	60	-	-	360	40	60	60	-	-	450	60	60	60	-	-
65 x 50 x 8UA	6.59	25	30	45	55	70	25	30	45	55	70	215	25	30	45	60	-	275	30	45	60	-	-
6UA	5.16	30	45	60	-	-	30	45	60	-	-	275	30	45	60	-	-	350	40	60	60	-	-
5UA	4.02	40	60	60	-	-	40	60	60	-	-	355	40	60	60	-	-	450	60	60	60	-	-