

FirePro-S[®] /FP-Steel[®]

**A Durable & Reliable Engineering Panel
Fire, Blast and Water Resistant
Maintenance Free**



*For the Latest Product information visit
www.sobenboard.com*

100%
ASBESTOS
FREE

ISO 9001
ISO 14001



FirePro-S®/FP-Steel®

FirePro-S®/FP-Steel® is a composite engineering panel made of fibre reinforced cement core with 2 outer facing 0.5mm perforated steel sheets mechanically bonded to both surfaces. It is classified as non-combustible in accordance with international standards and is tested to the latest European Standard for fire resistance up to 240minutes.



FirePro-S®/FP-Steel® is a durable & reliable panel for passive fire protections. It is an excellent choice fire protection for an wide range of structures, including high rise offices and hotels, manufacturing & warehousing complex, airports, mass transportation infrastructures, offshore oil production platforms, petrochemical plants and power generation plants,

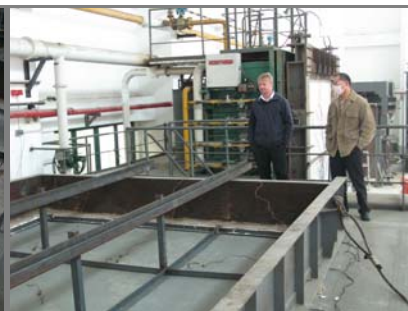
Performance

Size	1200 x 2400 mm
Thickness tolerance	6.0 mm, +1.5/-0.5mm 9.5 mm, +1.0/-1.0mm
Length tolerance	+/- 2.0 mm
Width tolerance	+/- 2.0 mm
Composition	Facing: 0.5mm thick G.I. steel or stainless steel plate Core: high density fibre cement
Weight at ambient	6.0 mm, 17 kg/m ² +/- 9.5 mm, 21 kg/m ² +/-
Moisture content by weight	7-8 % (core only)
Flexural strength	101 MPa
Resistant to continuous heating	350°C
Non-combustibility (core)	BS EN ISO 1182:2002, BS 476: Part 4
Fire resistance to 240 minutes	BS EN 1363, 1364-1 & 2
Sound reduction index	28dB

Single layer FirePro-S®/FP-Steel® ceiling under a 240minutes fire test to BS EN 1364-2











Prior to fire test



Lift off the furnace after a 4 hour fire test

Specific Properties

	Good mechanical & heavy impact resistance		Acoustic insulation
	Good chemical resistance		Non-combustible & fire resistance up to 240 minutes, BS EN Standard
	Rot proof, anti-bacterial, resistance to mould and fungal growth		Dimensional stability
	Maintenance free		Moisture resistance

Fastening Method

FirePro-S®/FP-Steel® panel is fixed with M5.5 hexagonal washer head self-drilling screws by an electric screw gun.



Cutting Method

FirePro-S®/FP-Steel® can be cut by a power sawing tool with tungsten carbide, jigsaw, or grinder. For high efficiency and large quantities, hydraulic guillotine or water-jet cutting can be used. The installer should wear proper personal safety measures; protective mask and goggles and works in a well-ventilated area during the cutting process. If working in the confined spacing, dust extraction equipment is recommended to control dust levels.



Applications

FirePro-S®/FP-Steel® panel is used in a wide range of commercial, industrial and public infrastructures requiring high degree of durability and reliability on fire protections. The typical applications are:

- E&M services enclosure, Ventilation ducts
- Industrial gear enclosures, fuel pipe protection, hatch covers, doors, escape tunnels
- Partitions, service shafts, lift enclosures, cavity barriers, spandrel
- Suspended ceilings, load bearing floorings, services shaft capping

Project Reference



FirePro-S®/FP-Steel® fire resistant wall
Production Plants at Asia Aluminum Industrial City

DISCLAIMER

The above information is issued in good faith. Soben International (Asia Pacific) Ltd can accept no responsibility for omissions or errors in content or interpretation. Soben International (Asia Pacific) Ltd has a policy of continuous improvement and reserves the right to change specifications, designs and products at any time without prior notice. Local authorities must be consulted for compliance with local building regulations.

For enquiry, please contact:

Soben International (Asia Pacific) Ltd.

International Sales and Export Office

Unit 4A, Evernew Commercial Centre

33 Pine Street, Kowloon, Hong Kong

Tel: +852 3173 2683

Fax: +852 3173 2688

E-mail: international@sobenboard.com

Website: www.sobenboard.com

Soben International (Europe) Ltd.

European Sales Office

27 High Street, Ballynahinch, Co. Down

N. Ireland

BT24 8AD

Tel: +44 78 94 230583

Fax: +44 28 44 616206

E-mail: europe@sobenboard.com

Website: www.sobenboard.com

Soben International (Singapore) Pte Ltd

Singapore Sales Office

13 Third Chin Bee Road,

Singapore 618689

Tel: +65 6261 5542

Fax: +65 6261 5452

E-mail: sg@sobenboard.com

Website: www.sobenboard.com

Copyright © 2009 Soben International. All rights reserved.